

## INSTALLATION INSTRUCTIONS FOR:

### DECK LIFT KIT 629GN-001A

1. SHUT OFF ENGINE AND SET PARK BRAKE.
2. ROTATE FRONT CASTER WHEELS AWAY FROM DECK (SEE ILLUSTRATION 3)
3. REMOVE DECK HEIGHT ADJUSTMENT PIN. (SEE ILLUSTRATION 3)
4. LOWER DECK TO LOWEST POSITION & REINSERT PIN ABOVE DECK LIFT HANDLE LOCKING LEVER IN LOWEST POSITION. (SEE ILLUSTRATION 3)
5. ON THE RIGHT HAND SIDE OF MOWER LIFT & HOLD UP THE HOOK KEEPER. LIFT UP ON THE RELEASE HANDLE TO RELEASE THE REAR OF THE DECK FROM THE MOWER. (THE LATCH PLATE HOLDS THE ROD IN PLACE.) (SEE ILLUSTRATION 1)
6. REMOVE DECK PROP, CLEVIS PIN, SPRING, WASHER & RING. (SEE ILLUSTRATION 3)
7. REPLACE CLEVIS PIN, WASHER & RING WITH NEW HARDWARE SUPPLIED IN KIT. (SEE ILLUSTRATION 5)
8. REMOVE CLEVIS PIN, WASHER & RING ATTACHING DRAG BAR (SEE ILLUSTRATION 4)
9. REATTACH DRAG BAR USING  $\frac{1}{2}$  X 4-1/2" FLANGE HEAD BOLT, SPACER & FLANGE LOCK NUT SUPPLIED IN KIT. (SEE ILLUSTRATION 6) DO NOT OVER TIGHTEN, DRAG BAR MUST BE ABLE TO PIVOT AGAINST YOKE CASTING
10. . ON 1500 SERIES DEFENDER MOWERS WITH 60" DECKS, SR1220 OR EARLIER BOSS MOWERS, IT IS NECESSARY TO MODIFY (SEE ILLUSTRATION 2) OR REPLACE THE OUTER DRAG BARS 642-059P WITH 659-299P TO ALLOW THE DECK JACK TO BE STOWED ON THE FRONT AXLE. REFER TO OPERATORS MANUAL FOR RELEVELING DECK AFTER REPLACEMENT OR SHORTENING LINK.
11. ROTATE FRONT STEP UP & OUT OF THE WAY.
12. ATTACH THE JACK MOUNTING BRACKETS TO THE FRONT AXLE AS SHOWN PLACING THE BRACKET WITH THE HEX SHAPED CUTOUT ON THE TRIM SIDE OF THE MOWER USING THE  $\frac{3}{8}$  X 4" FLANGE HEAD BOLT & FLANGE LOCK NUTS (SEE ILLUSTRATION 7) DO NOT TIGHTEN HARDWARE AT THIS TIME.
13. INSERT JACK ASSEMBLY INTO BRACKETS AS SHOWN SO THE JACK IS CENTERED ON AXLE & THE HEX DRIVE OF THE CRANK EXTENDS APPROXIMATELY  $\frac{1}{4}$ " THROUGH THE BRACKET. ATTACH THE OPPOSITE END TO THE BRACKET WITH THE SUPPLIED QUICK PIN. (SEE ILLUSTRATIONS 7&8)
14. TIGHTEN  $\frac{3}{8}$ " HARDWARE.

15. LIFT UP ON THE LATCH PLATE RELEASING THE HANDLE ROD. PUSH DOWN ON THE RELEASE HANDLE UNTIL THE DECK HOOKS LOCK INTO PLACE. (ILLUSTRATION 1)

16. INSTALLATION IS COMPLETE.

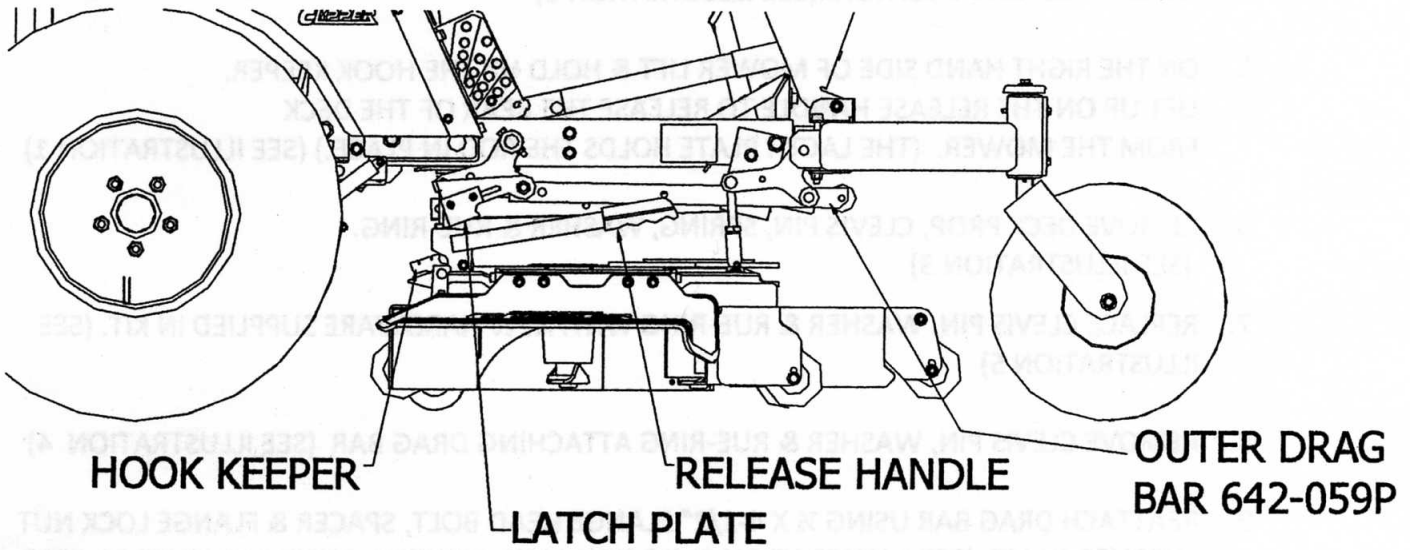


ILLUSTRATION 1

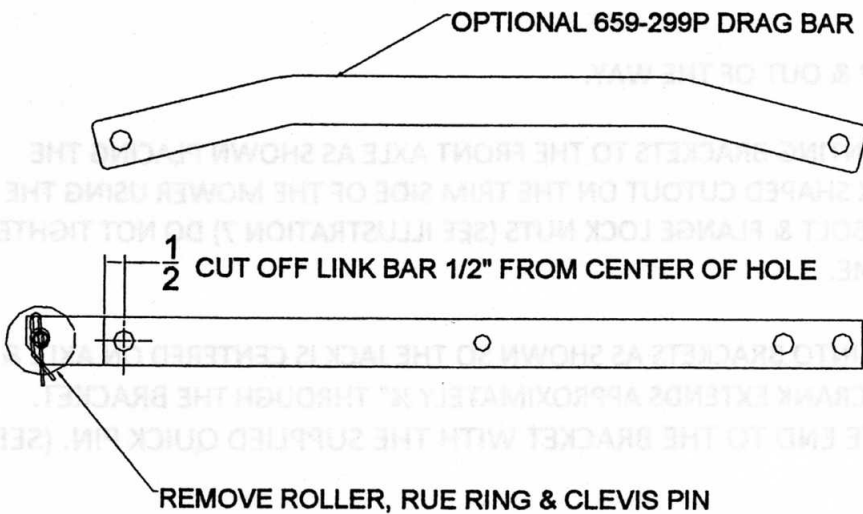


ILLUSTRATION 2

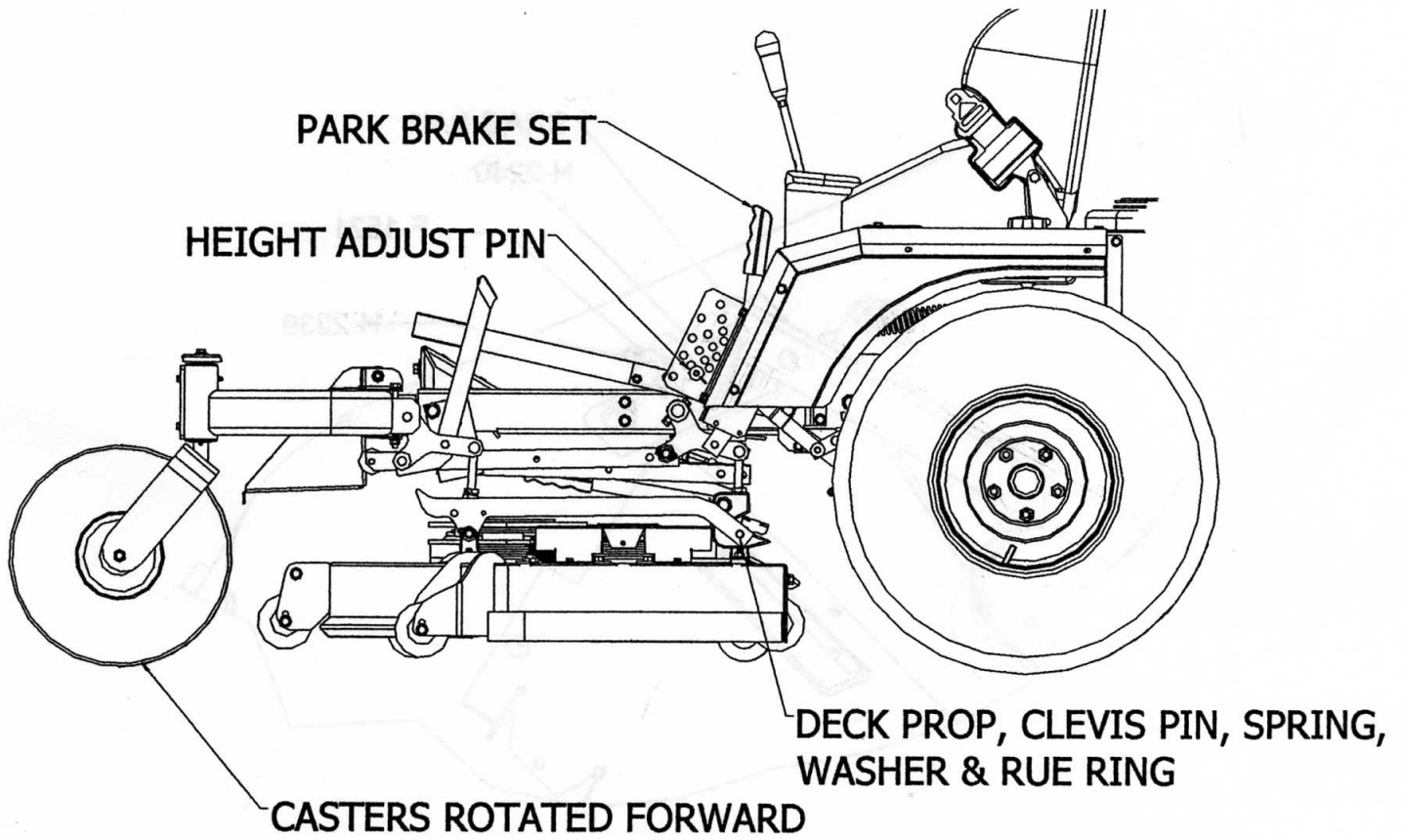
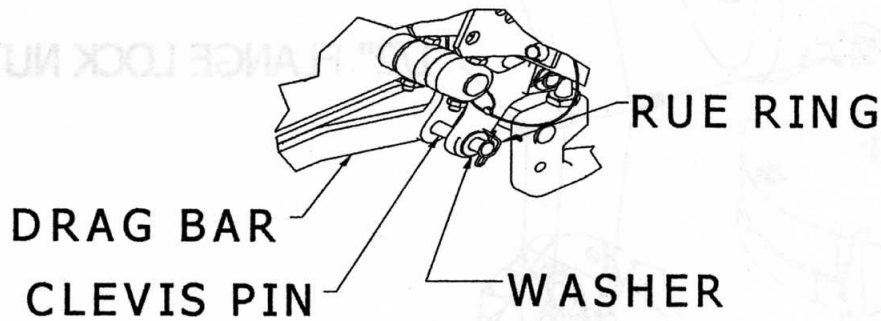


ILLUSTRATION 3



(REMOVE) ILLUSTRATION 4

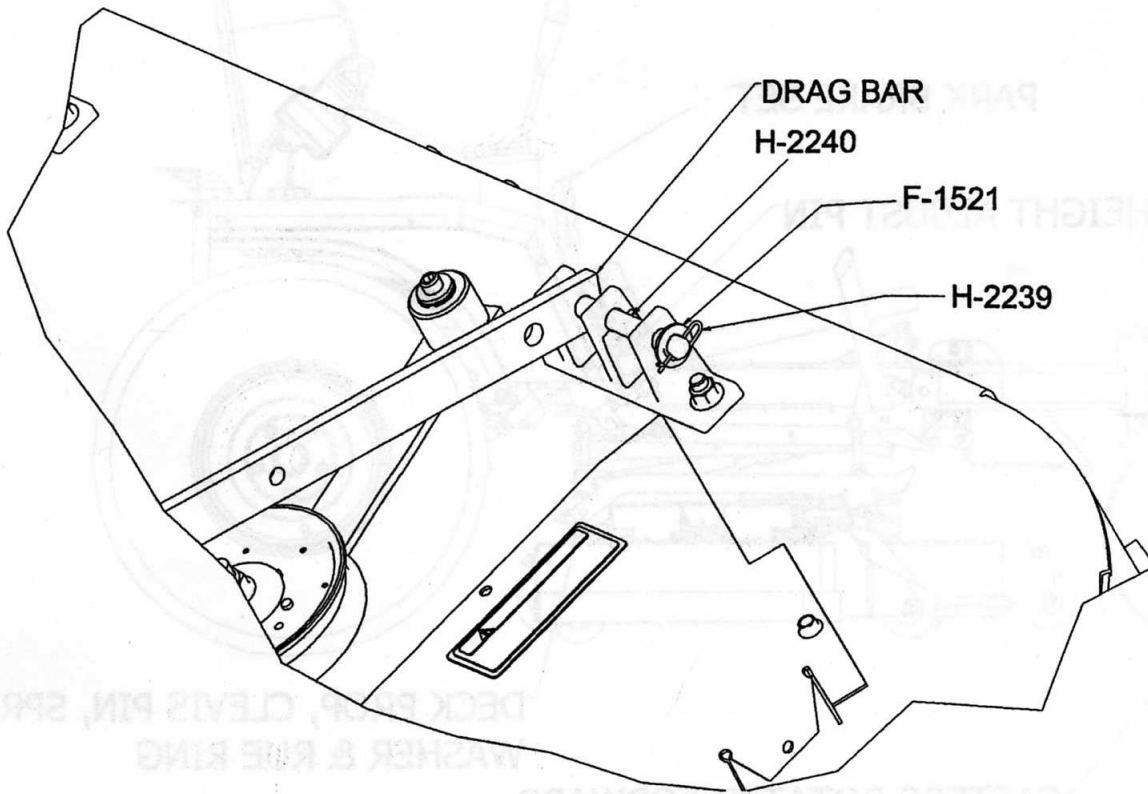
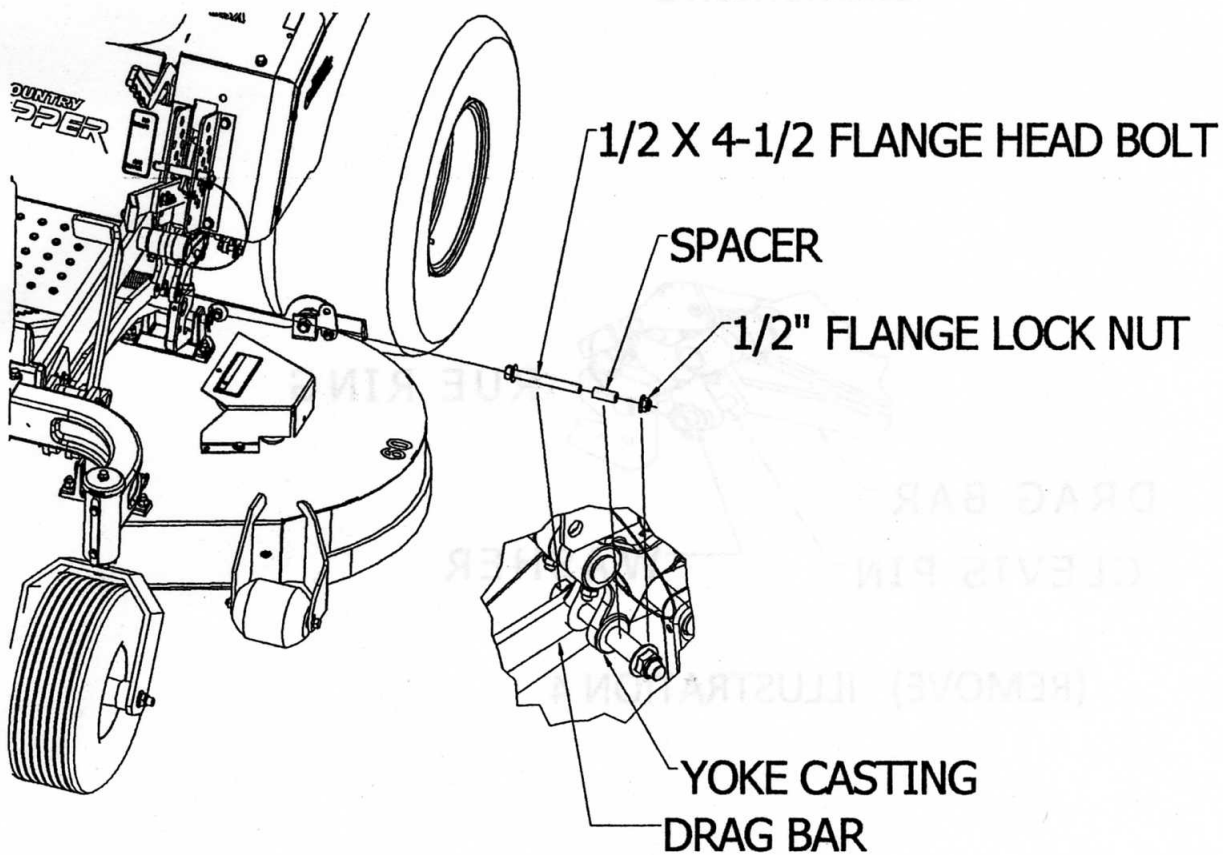


ILLUSTRATION 5 (REPLACE)



(INSTALL) ILLUSTRATION 6

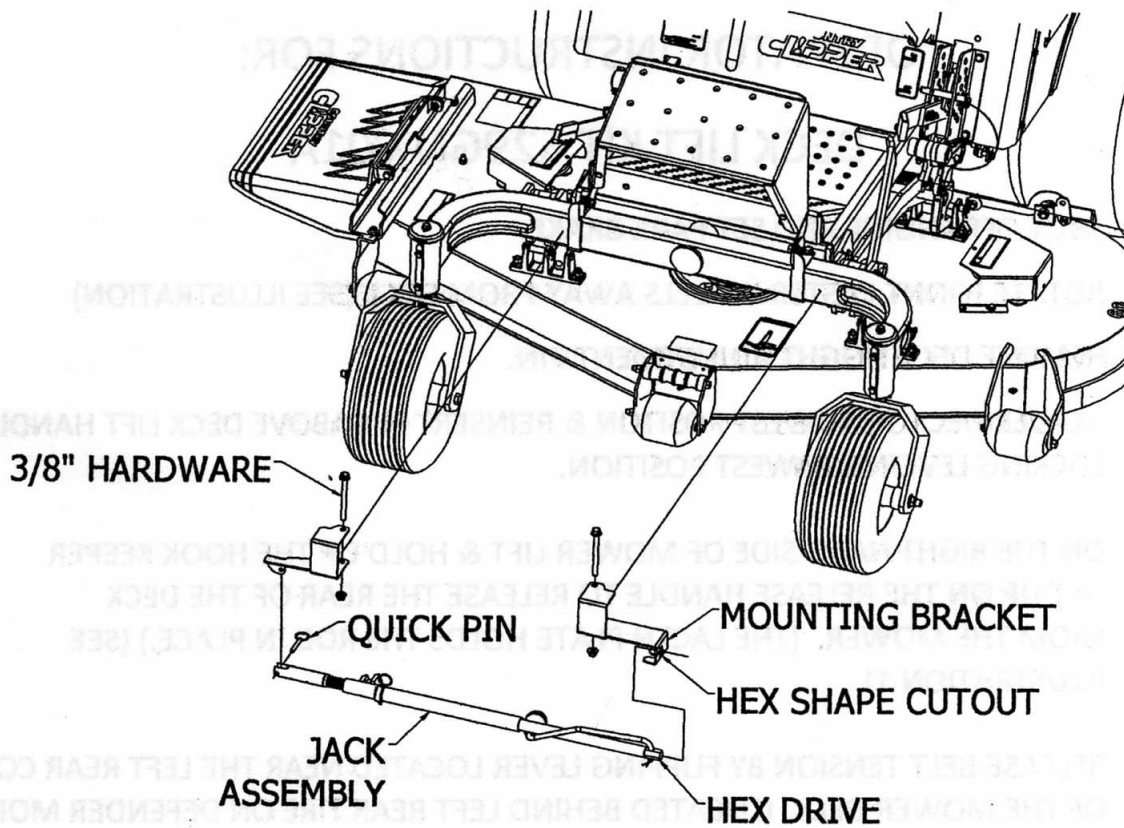


ILLUSTRATION 7

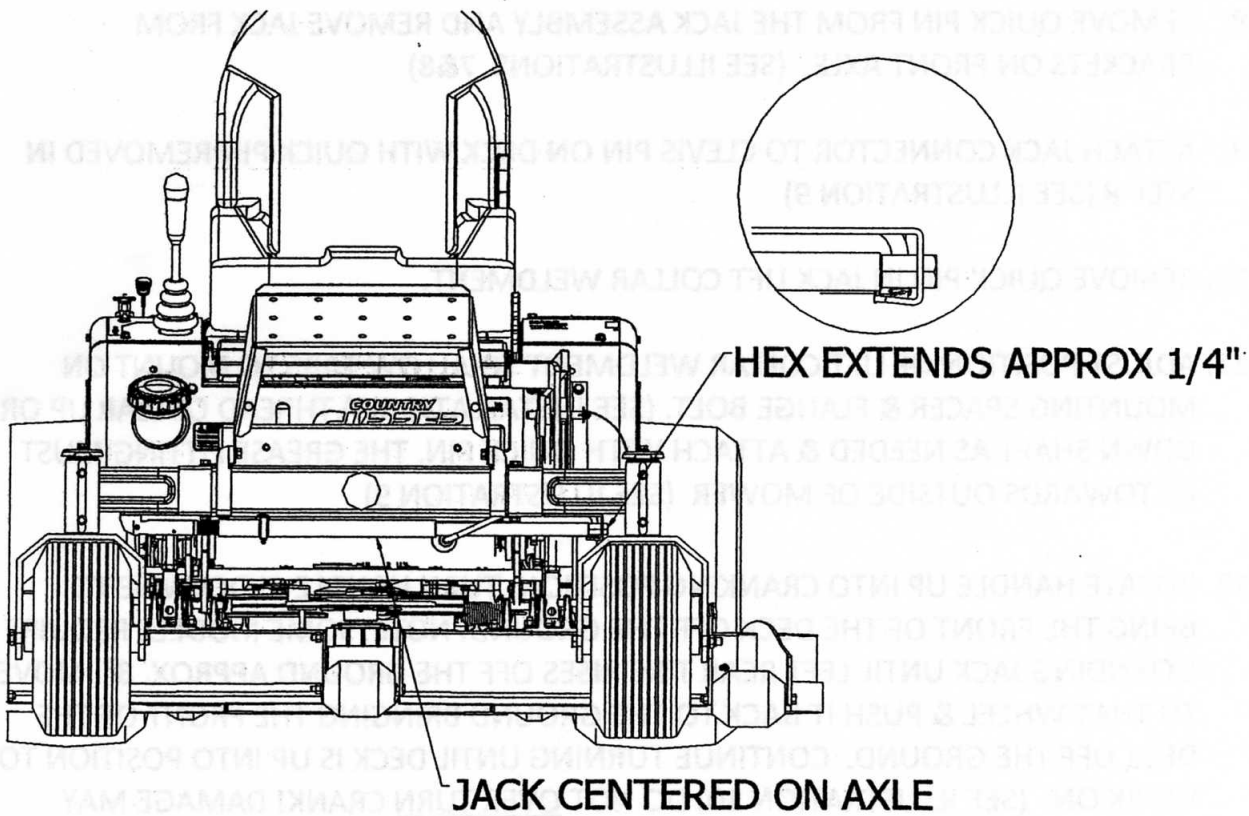


ILLUSTRATION 8

## OPERATOR INSTRUCTIONS FOR: DECK LIFT KIT 629GN-001A

1. SHUT OFF ENGINE AND SET PARK BRAKE.
2. ROTATE FRONT CASTER WHEELS AWAY FROM DECK (SEE ILLUSTRATION)
3. REMOVE DECK HEIGHT ADJUSTMENT PIN.
4. LOWER DECK TO LOWEST POSITION & REINSERT PIN ABOVE DECK LIFT HANDLE LOCKING LEVER IN LOWEST POSITION.
5. ON THE RIGHT HAND SIDE OF MOWER LIFT & HOLD UP THE HOOK KEEPER. LIFT UP ON THE RELEASE HANDLE TO RELEASE THE REAR OF THE DECK FROM THE MOWER. (THE LATCH PLATE HOLDS THE ROD IN PLACE.) (SEE ILLUSTRATION 1)
6. RELEASE BELT TENSION BY FLIPPING LEVER LOCATED NEAR THE LEFT REAR CORNER OF THE MOWER DECK. (LOCATED BEHIND LEFT REAR TIRE ON DEFENDER MODELS)
7. ROTATE FRONT STEP UP & OUT OF THE WAY
8. REMOVE QUICK PIN FROM THE JACK ASSEMBLY AND REMOVE JACK FROM BRACKETS ON FRONT AXLE. (SEE ILLUSTRATIONS 7&8)
9. ATTACH JACK CONNECTOR TO CLEVIS PIN ON DECK WITH QUICK PIN REMOVED IN STEP 8 (SEE ILLUSTRATION 9)
10. REMOVE QUICK PIN IN JACK LIFT COLLAR WELDMENT.
11. ADJUST POSITION OF LIFT COLLAR WELDMENT TO ALLOW TABS TO MOUNT ON MOUNTING SPACER & FLANGE BOLT. (SEE INSTALLATION 9). THREAD COLLAR UP OR DOWN SHAFT AS NEEDED & ATTACH WITH QUICK PIN. THE GREASE FITTING MUST BE TOWARDS OUTSIDE OF MOWER (SEE ILLUSTRATION 9)
12. ROTATE HANDLE UP INTO CRANKING POSITION. TURN HANDLE CLOCKWISE TO BRING THE FRONT OF THE DECK OFF THE GROUND. NOTE: SOME MODELS REQUIRE EXTENDING JACK UNTIL LEFT REAR TIRE RISES OFF THE GROUND APPROX. 8". MOVE TO THAT WHEEL & PUSH IT BACK TO THE GROUND BRINGING THE FRONT OF THE DECK OFF THE GROUND. CONTINUE TURNING UNTIL DECK IS UP INTO POSITION TO WORK ON. (SEE ILLUSTRATION 10) DO NOT OVER TURN CRANK! DAMAGE MAY OCCUR.



NOTE: IT IS POSSIBLE TO OPERATE JACK WITH IMPACT GUN/WRENCH. TO DO SO REMOVE CRANK HANDLE & KNOB BY REMOVING RING. A  $\frac{3}{4}$ " WRENCH WILL FIT ON END OF SHAFT WELDMENT.

13. TO LOWER DECK, REVERSE THE PROCESS.



**CAUTION**



**CAUTION: KEEP FEET CLEAR FROM EDGE OF DECK WHEN LOWERING DECK FROM STAND-UP TO OPERATION POSITION.**

14. LIFT UP ON THE LATCH PLATE RELEASING THE HANDLE ROD. PUSH DOWN ON THE RELEASE HANDLE UNTIL THE DECK HOOKS LOCK INTO PLACE.

15. APPLY ONE OR TWO PUMPS OF GREASE TO ZERK OCCASIONALLY TO KEEP CRANK OPERATING FREELY.

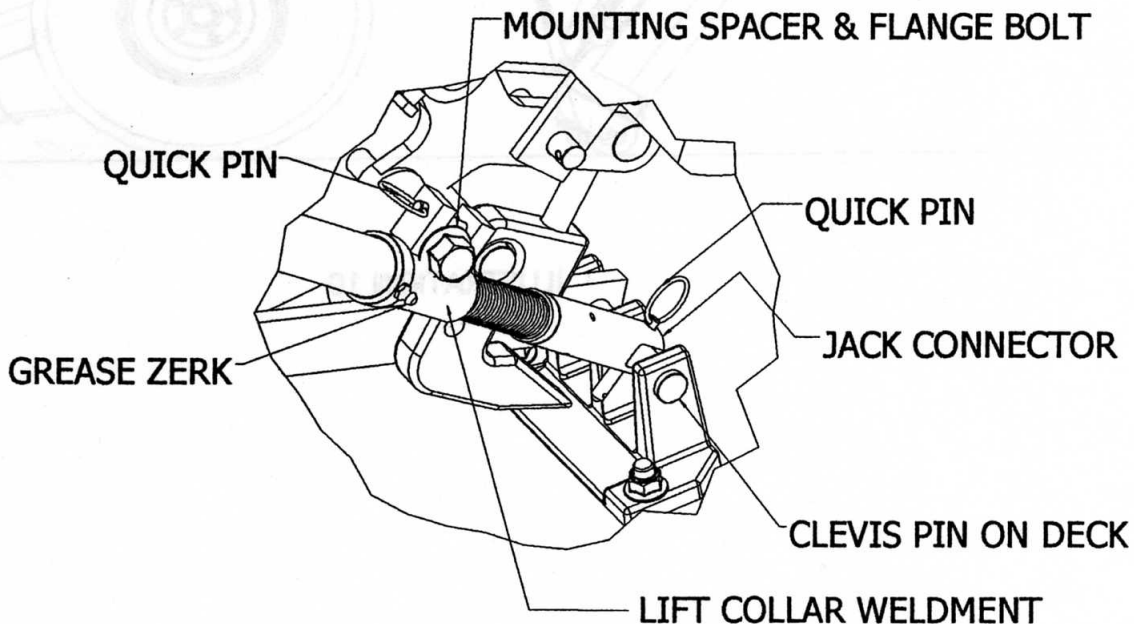
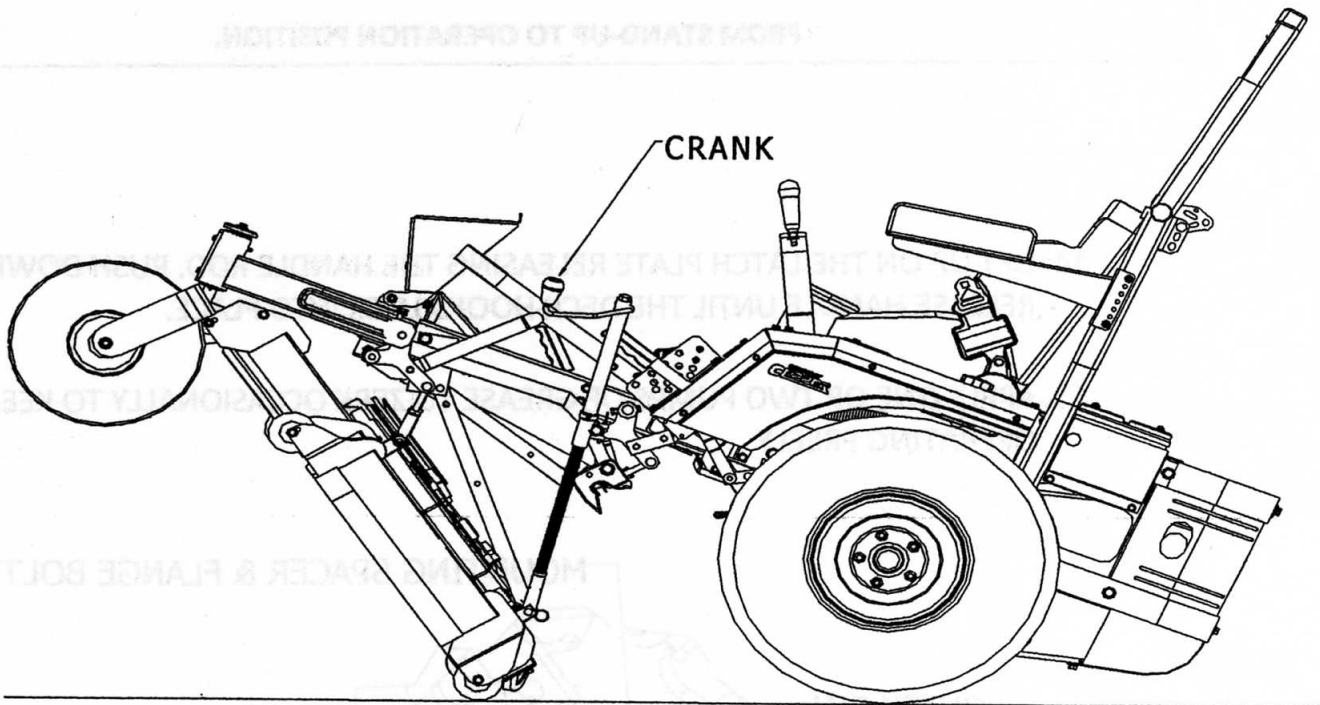


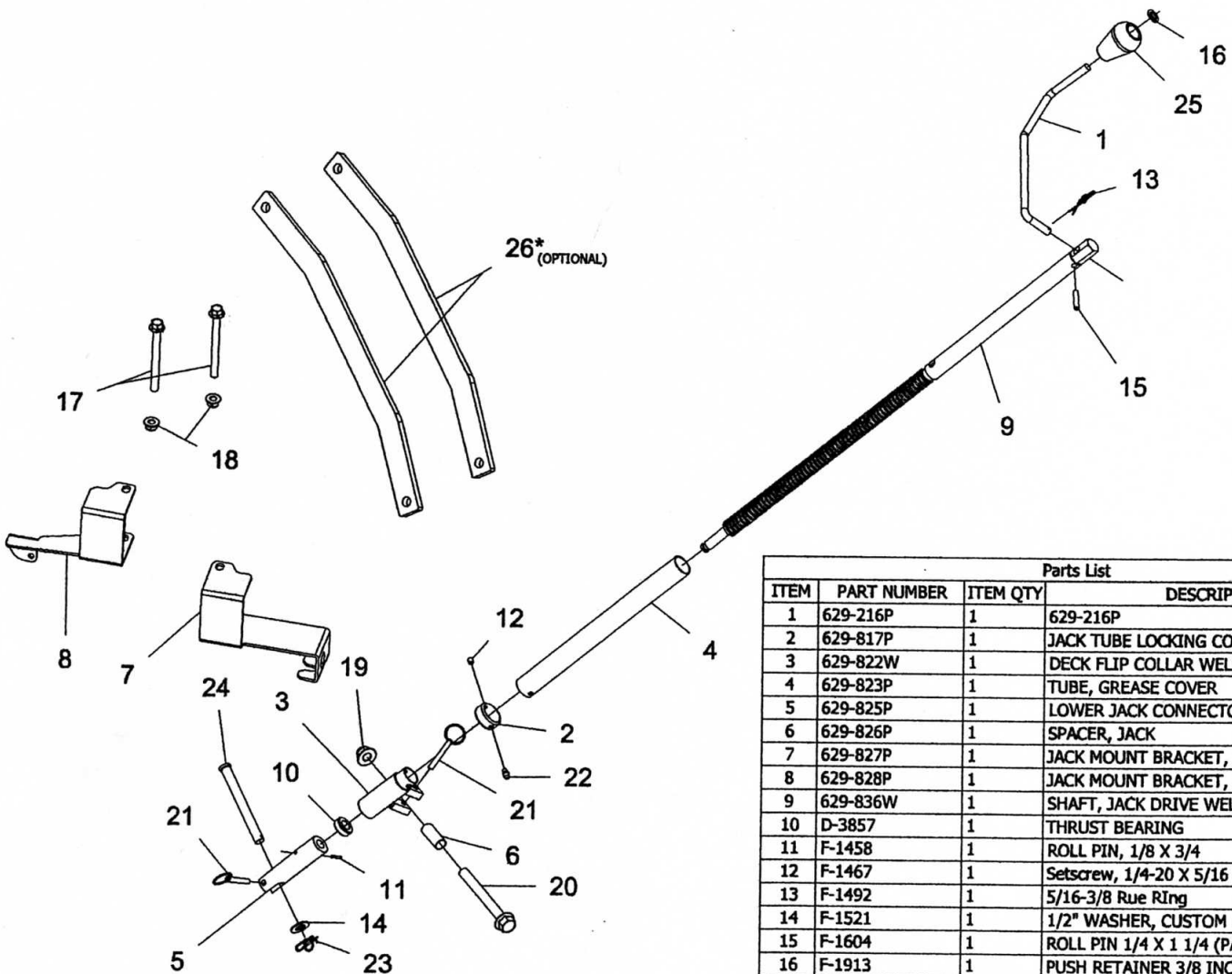
ILLUSTRATION 9



ILUSTRATION 10



# PARTS BREAKDOWN



Parts List			
ITEM	PART NUMBER	ITEM QTY	DESCRIPTION
1	629-216P	1	629-216P
2	629-817P	1	JACK TUBE LOCKING COLLAR
3	629-822W	1	DECK FLIP COLLAR WELDMENT
4	629-823P	1	TUBE, GREASE COVER
5	629-825P	1	LOWER JACK CONNECTOR
6	629-826P	1	SPACER, JACK
7	629-827P	1	JACK MOUNT BRACKET, LH
8	629-828P	1	JACK MOUNT BRACKET, RH
9	629-836W	1	SHAFT, JACK DRIVE WELDMENT
10	D-3857	1	THRUST BEARING
11	F-1458	1	ROLL PIN, 1/8 X 3/4
12	F-1467	1	Setscrew, 1/4-20 X 5/16 Nyloc
13	F-1492	1	5/16-3/8 Rue Ring
14	F-1521	1	1/2" WASHER, CUSTOM
15	F-1604	1	ROLL PIN 1/4 X 1 1/4 (PART OF 629-836W)
16	F-1913	1	PUSH RETAINER 3/8 INCH
17	F-2142	2	FHCS, 3/8-16 x 4", YZ, GR5
18	F-2151	2	Nut, 3/8-16 Nyloc, Flanged
19	F-2152	1	Nut, 1/2-13 Nyloc, Flanged
20	F-2181	1	FHCS, 1/2-13 X 4.50, YZ, GR8
21	F-2183	2	1/4 x 1-1/2" QUICK PIN
22	H-1056	1	1/4" Grease Fitting
23	H-2239	1	1/2" Rue Ring
24	H-2240	1	1/2" x 4-1/2" Clevis Pin
25	H-2343	1	KNOB
26	659-299P*	2	BAR, DRAG (OPTIONAL)

\*OPTIONAL DRAG BAR FOR MY 2013 60" DEFENDER UNITS & EARLIER BOSS UNITS.